

## KENTALROOF-A CONFORT 560 T4 3kW (279564100AL)

### GENERAL DATA



#### ROOF FAN WITH FOLDING SYSTEM AND ALUMINIUM COWL

##### MANUFACTURING FEATURES:

- Protection cowl made of anticorrosive treated aluminum easily removable for motor and impeller maintenance thanks to the integrated folding system.
- The design of the cowl with a **rounded shape** is specific to minimize the risk of water ingress due to rain.
- Equipped with a **hinged system** to open the motor-impeller set. This system allows easy maintenance and cleaning of the set without the need to disassemble the entire structure. The opening is possible in 2 inclinations: approximately 45° and 90°, as required by the intervention.
- Structure in anticorrosive galvanized steel and support frame for adaptation to the roof with anti-bird protection grid.
- High-performance, backward-curved blade (reaction) impellers designed to work without scroll. Self-cleaning system, built in galvanized steel treated with anti-corrosion.
- Standard asynchronous squirrel cage motor with IP-55 protection and Class F insulation. Standard voltages 230V 50Hz for single phase motors, 230/400V 50Hz for three phase motors up to 4kW & 400/690V 50Hz for higher powers and 400V 50Hz for 2 speed motors.

#### APPLICATIONS

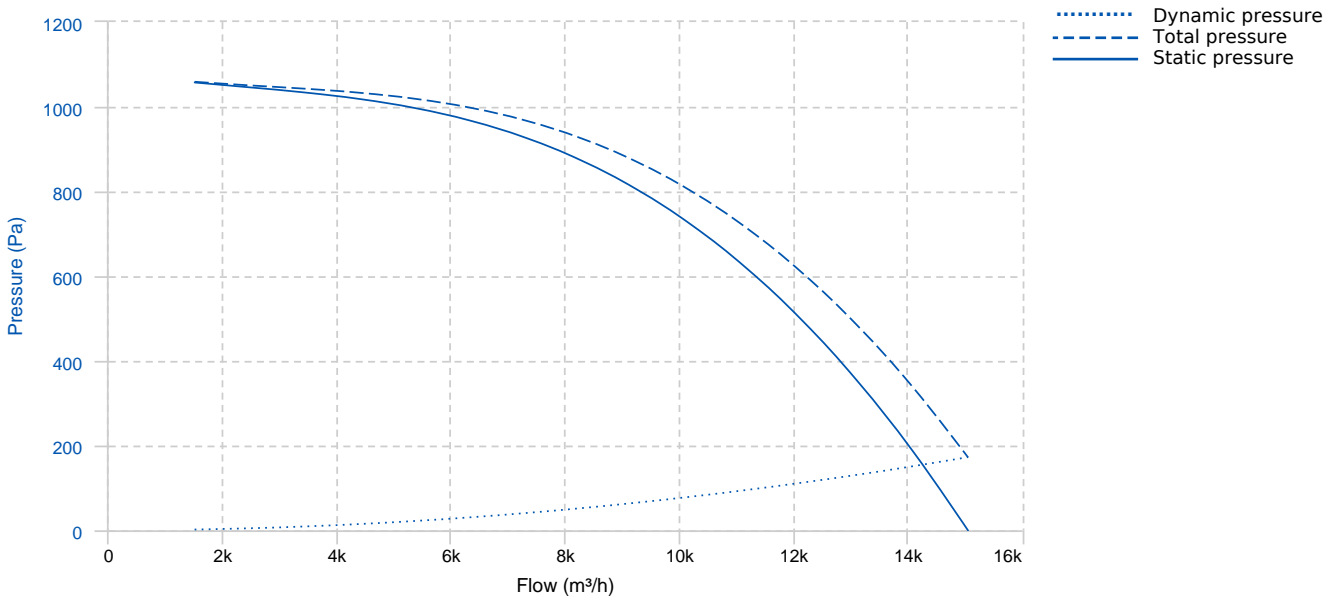
Designed for deck or roof mounting, they are indicated for:

- Smoke extraction.
- Air renewal in all types of buildings and industries.
- Maximum continuous working temperature: transported air 80°C, ambient 60°C to -25°C in three-phase motors.

#### UNDER REQUEST

- Special voltages.
- Special construction for moving air at 120°C. Serie:

## PERFORMANCE CURVE

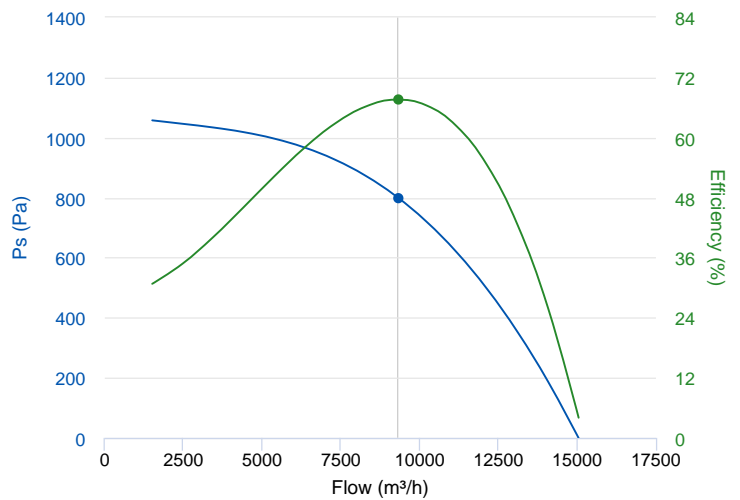


## TECHNICAL DATA

Fan							
RPM	1420	Approx. weight	104 kg	Max. Flow	15040 m³/h		
Motor							
Power	3 kW	RPM	1420	I max. (230V)	10,7 A	I max. (400V)	6,17 A
Size	100L	Approx. weight	34 kg	Efficiency (%)	87.7 %	FP	0.82

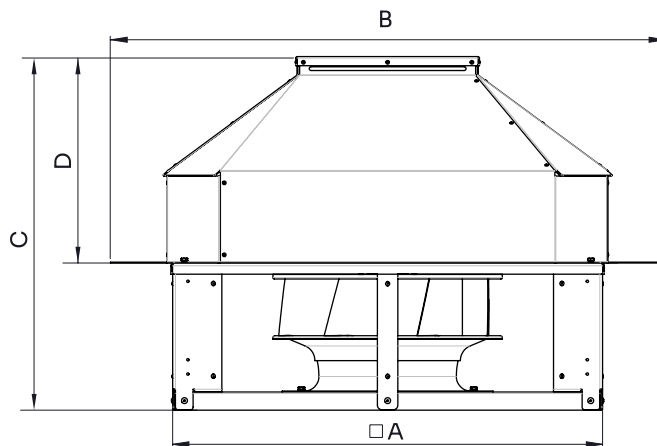
## ERP DATA

Fan data sheet		
Fan type	Unit for non-residential ventilation (LOT 6)	
Typology	Unidirectional	
reports.other	None	
Type of driver	None	
Motor power (kW)	3	
	Fan values	ERP Requirements 2018
Max. efficiency (%)	67.58	49.26
Effic. Heat recovery (%)	-	
Pabs (kW)	3.223	
Flow (m³/h)	9324.54	
Static pressure (Pa)	798.8	
Speed (m/s)	10.52	



	Fan values	ERP Requirements 2018
SFP (W/m <sup>3</sup> /s)	1244.36	

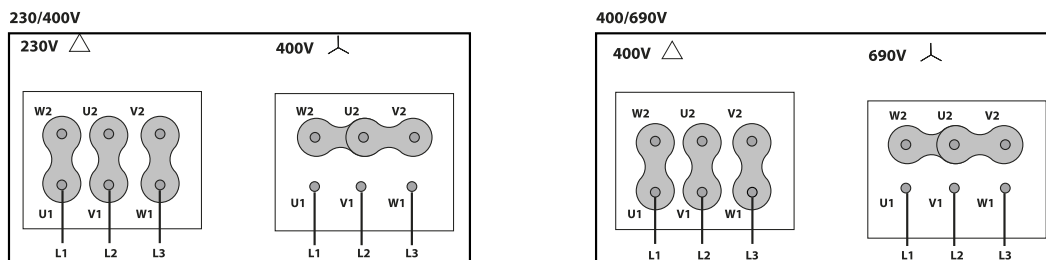
## DIMENSIONS



### Dimensions (mm)

A (int)	936	B	1220	C	849.6	D	470
---------	-----	---	------	---	-------	---	-----

## WIRING DIAGRAM



## ACCESSORIES



**SAFETY SWITCH**  
**INT 25 3P A**  
**REF: INT253PA**



**CONNECTION FLANGE**  
**AC 560**  
**REF: 960003215**



**CIRCULAR SILENCER**  
**SIL-C 560/560**  
**REF: 960056056**



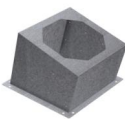
**CIRCULAR SILENCER**  
**SIL-C 560/1120**  
**REF: 960056112**



**CIRCULAR SILENCER**  
**SIL-CN 560/840**  
**REF: 961056084**



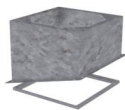
**CIRCULAR-CIRCULAR ANTI-VIBRATION FLANGE**  
**BAD 14 (Ø560)**  
**REF: 960003464**



**INCLINED ROOF FAN SUPPORT**  
**BTI 915**  
**REF: A-50870915XX**



**KENTALROOF VERTICAL DISCHARGE**  
**KV KENTALROOF 560**  
**REF: KVKNTR560**



**BTI + AMC MOUNTED**  
**BTI+AMC 915**  
**REF: BTIAMC915XX**



**CIRCULAR SILENCER**  
**SIL-C 560/840**  
**REF: 960056084**



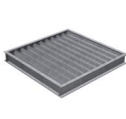
**CIRCULAR SILENCER**  
**SIL-CN 560/560**  
**REF: 961056056**



**CIRCULAR SILENCER**  
**SIL-CN 560/1120**  
**REF: 961056112**



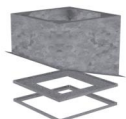
**FREQUENCY SPEED CONTROLLER**  
**SFC 400 III 8A \***  
**REF: SFC400III8**



**DEPRESSION DAMPER (HORIZONTAL or VERTICAL PLACEMENT)**  
**CMP-HUT 500x510**  
**REF: CMPHUT5051**

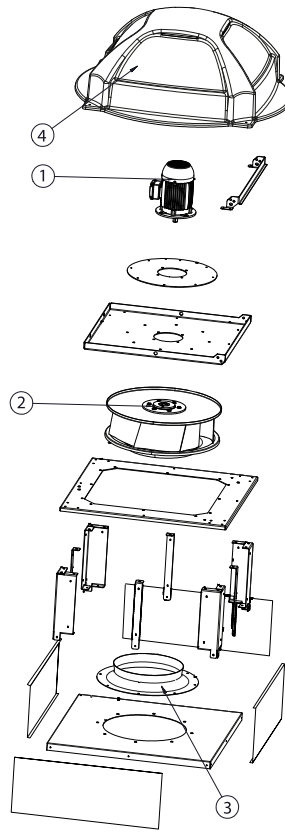


**BTI + ACMP MOUNTED**  
**BTI+ACMP 915**  
**REF: BTIACMP915XX**



**BTI + ACMP+AMC MOUNTED**  
**BTI+ACMP+AMC 915**  
**REF: BTIACMPAMC915XX**

**SPARE PARTS**



	Code	Model	Qty
1	721001170	MOTOR 3KW T4 B5 230/400V	x1
2	R-R63D1L560-28	IMPELLER R63D1L560x160x28 LG	x1
3	R-BAD560PK1	INLET CONE ED11P 560	x1
4	R-279564478A	ROOF COWL KENTALROOF-A 450-500-560	x1